

MULTI-DISCIPLINARY

# The Ultimate Map of All Pacific Standard Time: LA/LA Exhibits (So Far)

Samanta Helou Hernandez | September 5, 2017



This is produced in partnership with Pacific Standard Time: LA/LA, a far-reaching and ambitious exploration of Latin American and Latino art in dialogue with Los Angeles.

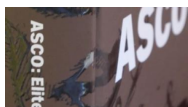
Starting this September, Southern California will be a hotbed of art exhibitions, musical performances and film screening events, all exploring the region's relationship to Latin America. The ambitious effort is called Pacific Standard Time: LA/LA. An initiative of the Getty Foundation, PST: LA/LA involves every organization imaginable — from a pioneering family-run printmaking gallery to a multibillionaire's stunning contemporary art museum in downtown Los Angeles. The exhibitions also cover an amazing variety of work, from pre-Colombian luxury art, Latino film culture in Hollywood and even Disney's influence on Latin America.

Regular *Artbound* readers will no doubt recognize the names of many of SoCal's seminal artists included in the exhibitions: Judith Baca and her Great Wall, Ken Gonzales-Day, Patssi Valdez, but there will be more to discover. To help you navigate this massive cultural celebration, we've created this map to help you get the most out of your Pacific Standard Time: LA/LA experience.

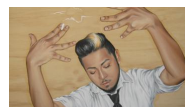
## READ MORE ABOUT PST LA/LA ARTISTS



**Border Trolley Tours Reveal the Contested History of San Diego-Tijuana Border**



**1970s L.A. Chicano Conceptual Art Group Gets its Due**



**Counter Cliché: The Asian and Latino Bi-Cultural Experience**

Pro-tip: you can filter for all the free exhibitions. Click on the "View Larger Map" icon on the upper right hand side of the map below, then look for the magnifying glass icon on the left-hand side and type in a search for "Free Admission" to view all the exhibitions offered to the public gratis.

See [pacificstandardtime.org](http://pacificstandardtime.org) for a full and up-to-date list of all the exhibitions and events. Sign up for the Artbound newsletter to receive our latest coverage of PST: LA/LA.

Top Image: David Botello, *Space Walkers*, 2002. | David Botello

### SUPPORT THE ARTICLES YOU LOVE

We are dedicated to providing you with articles like this one. Show your support with a tax-deductible contribution to [KCET](http://KCET). After all, public media is meant for the public. It belongs to all of us.

DONATE

ABOUT THE AUTHOR  
SAMANTA HELOU HERNANDEZ



Samanta Helou Hernandez is a freelance multimedia journalist covering food, culture, music, and Latinx issues. Her work has been featured in publications such as LA Weekly, Mitú, and Remezcla among others. You can find her work at [samantahelou.com](http://samantahelou.com).